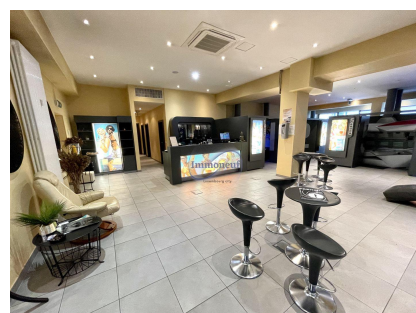
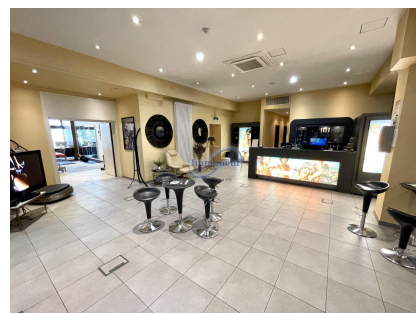




**Commerce**  
286m<sup>2</sup>  
Luxembourg-Centre

**9 000€**  
Monthly charges : 1 100€



## DESCRIPTION

## ENERGY PASS

Retail area of ??+/- 286m<sup>2</sup> on the mezzanine of the Forum Royal building with a view of the Boulevard Royal. The shop accessible by 2 different entrances is composed as follows: very spacious entrance / reception hall opening onto another very bright area, 1 other well-sized room, individual office, separate fitted kitchen, 2 WCs, 2 showers. Fully air conditioned. Suitable for all types of businesses or offices. Excellent for doctor, physiotherapist, consumer lounge, ... HORESCA accepted. Takeover of the Solarium / Massage also possible. Availability to be agreed. Please, contact the Immoneuf agency at 26.26.40

## CHARACTERISTICS

Number of pieces : -  
Nb. chamber (s) : -  
Area : 286m<sup>2</sup>  
Nb. of bathrooms : -  
Equipped kitchen : Non



**Immoneuf**



**28, rue des Bains L-1212**



**26 26 40**



**immoneuf@pt.lu**



**<https://www.immoneuf.lu/detail-2234395>**