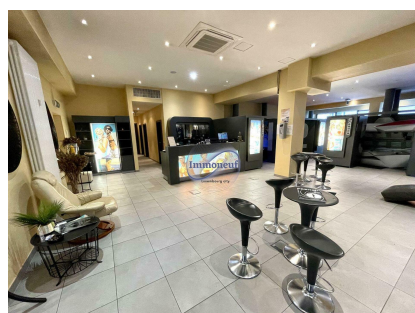
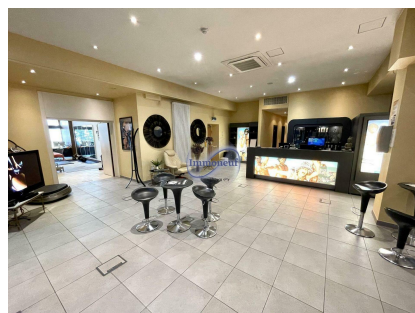




Office
286m²
Luxembourg-Centre

9 800€
Monthly charges : 1 000€



DESCRIPTION

ENERGY PASS

Office space of +/- 286m² on the mezzanine of the Forum Royal building with a view of the Boulevard Royal! The offices are accessible by 2 different entrances and are composed as follows: large open space with very bright entrance / reception hall, meeting room / offices, individual office, independent fitted kitchen, 2 WCs, 2 showers. Fully air conditioned. Availability to be agreed. Please contact the Immoneuf agency at 26.26.40

CHARACTERISTICS

Number of pieces : -
Nb. chamber (s) : -
Area : 286m²
Nb. of bathrooms : -
Equipped kitchen : Non



Immoneuf



28, rue des Bains L-1212



26 26 40



immoneuf@pt.lu



<https://www.immoneuf.lu/detail-2234411>