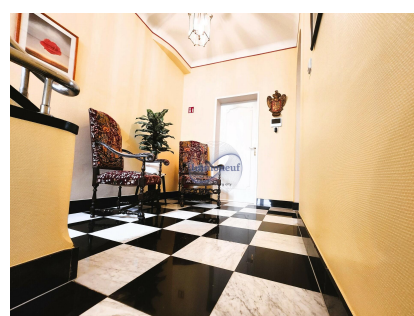




House

217m² 5 Bedroom(s)
Luxembourg

2 500 000€



DESCRIPTION

ENERGY PASS

This house, located in the popular district of Hollerich, in the commune of Luxembourg, represents a rare opportunity combining space, brightness and central location. Renovated in the 2000s, the property offers a living area of 217 m² and a total area of 309 m², spread over several levels, with a functional basement and an intimate garden/ courtyard of 25 m². Upon entering the house, you are greeted by a spacious hall, decorated with an elegant staircase and a central landing, which serves two versatile rooms of 18 m² and 20 m². These can be used as offices, additional rooms or service space as needed. A separate toilet is also accessible from this level. The hall also allows access to the semi-basement. The first floor, the heart of the house, opens onto a refined living room. The living room is in continuity with a dining room, offering a friendly and bright living space. From the dining room, a small balcony of 2 m² allows you to enjoy a beautiful view of the Austrian Embassy, cre...

CHARACTERISTICS

Number of pieces : -

Nb. chamber (s) : 5

Area : 217m²

Nb. of bathrooms : 2

Equipped kitchen : Non



Immoneuf



28, rue des Bains L-1212



26 26 40



immoneuf@pt.lu



<https://www.immoneuf.lu/detail-2234789>