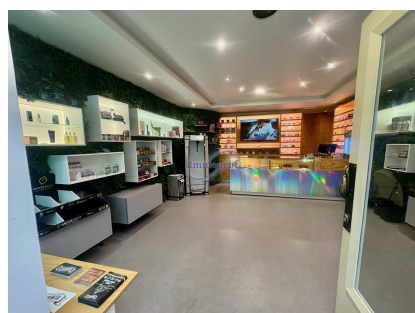




**Commerce**  
61m<sup>2</sup>  
Luxembourg

**3 500€**  
**Monthly charges : 250€**



## DESCRIPTION

## ENERGY PASS

61 m<sup>2</sup> commercial space - Rue Louvigny, downtown Luxembourg Available immediately. All activities authorized, except HORECA. Located on Rue Louvigny, in the heart of downtown Luxembourg, this 61 m<sup>2</sup> premises benefits from a strategic location on one of the capital's busiest pedestrian streets. The premises comprise a bright main room at the front, a storeroom at the rear and a separate toilet. It is ideally suited to any business seeking optimum visibility in a dynamic retail environment. For further information or to arrange a viewing, we'd be delighted to help you: contact us on 26 26 40 or by e-mail at [immoneuf@pt.lu](mailto:immoneuf@pt.lu).

## CHARACTERISTICS

Number of pieces : 2  
Nb. chamber (s) : -  
Area : 61m<sup>2</sup>  
Nb. of bathrooms : -  
Equipped kitchen : Non



**Immoneuf**



**28, rue des Bains L-1212**



**26 26 40**



**[immoneuf@pt.lu](mailto:immoneuf@pt.lu)**



**<https://www.immoneuf.lu/detail-2234859>**