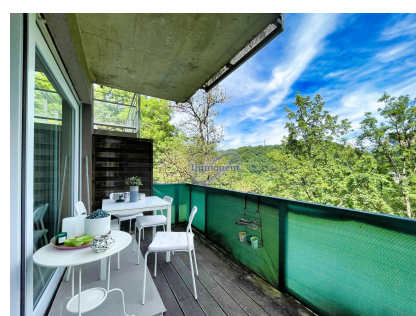




Apartment
70m² 2 Bedroom(s)
Luxembourg-Limpertsberg

750 000€



Located on the second floor of a well-maintained building with an elevator, this apartment offers a comfortable and functional living environment. The property consists of two bedrooms, a pleasant living room opening onto an open kitchen, with direct access to a terrace that is completely private. A bathroom equipped with a bathtub, shower, and sink completes the sleeping area, along with a separate toilet. The apartment spans the full width of the building, offering beautiful views, excellent airflow, and natural light that is particularly pleasant throughout the day. Additionally, the property includes a parking space in the basement as well as a private storage unit. Available immediately, this apartment is an opportunity not to be missed. A visit is essential to fully appreciate its potential. For further information or to schedule a visit, please contact us at 26 26 40 or by email at immoneuf@pt.lu

CHARACTERISTICS

Number of pieces : 5

Nb. chamber (s) : 2

Area : 70m²

Nb. of bathrooms : 1

Equipped kitchen : Non

 **Immoneuf**

 **28, rue des Bains L-1212**

 **26 26 40**

 **immoneuf@pt.lu**

 **<https://www.immoneuf.lu/detail-2234943>**